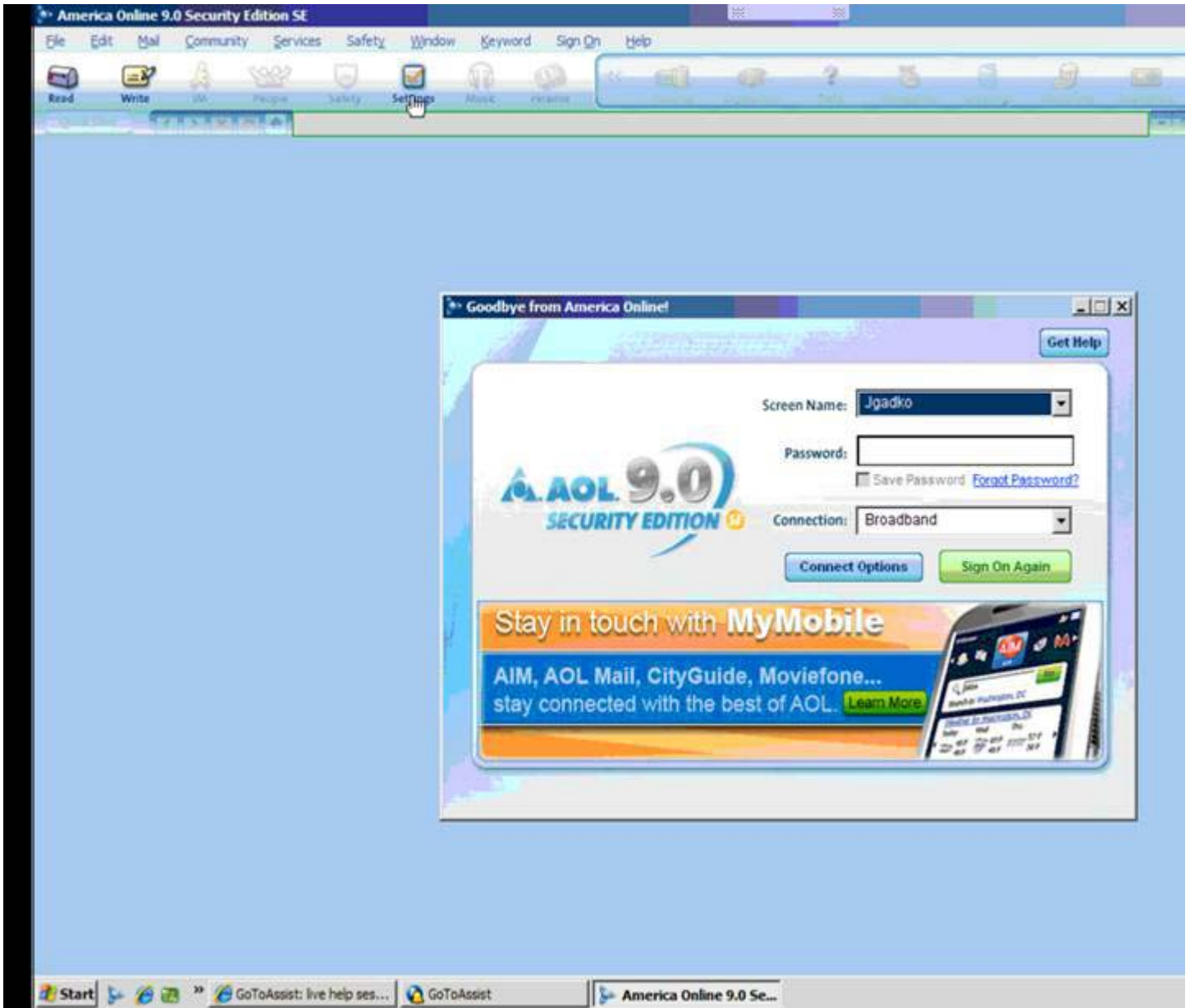


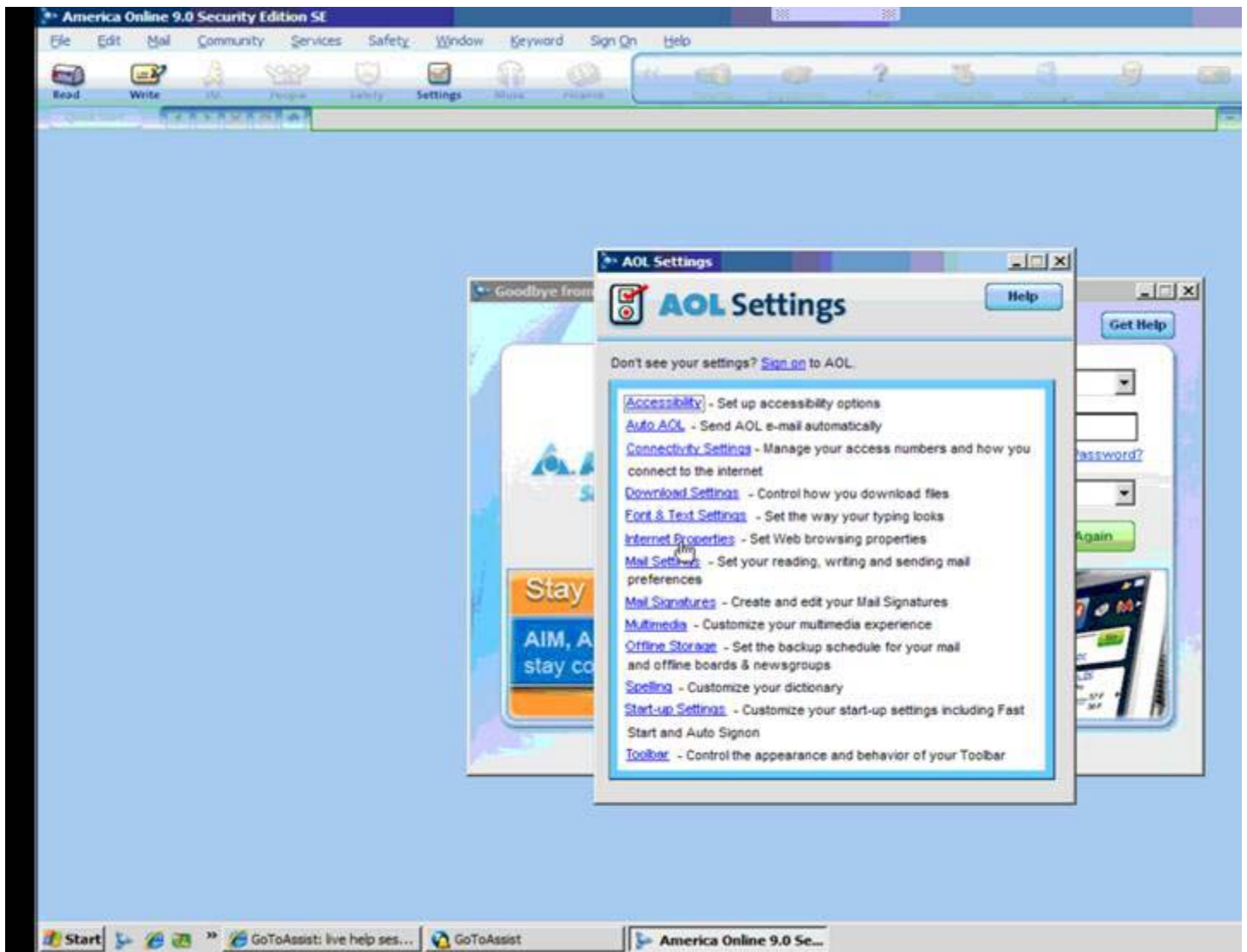
**For users of AOL 9.0 Classic:**

This is the process for turning off TopSpeed in AOL Classic:

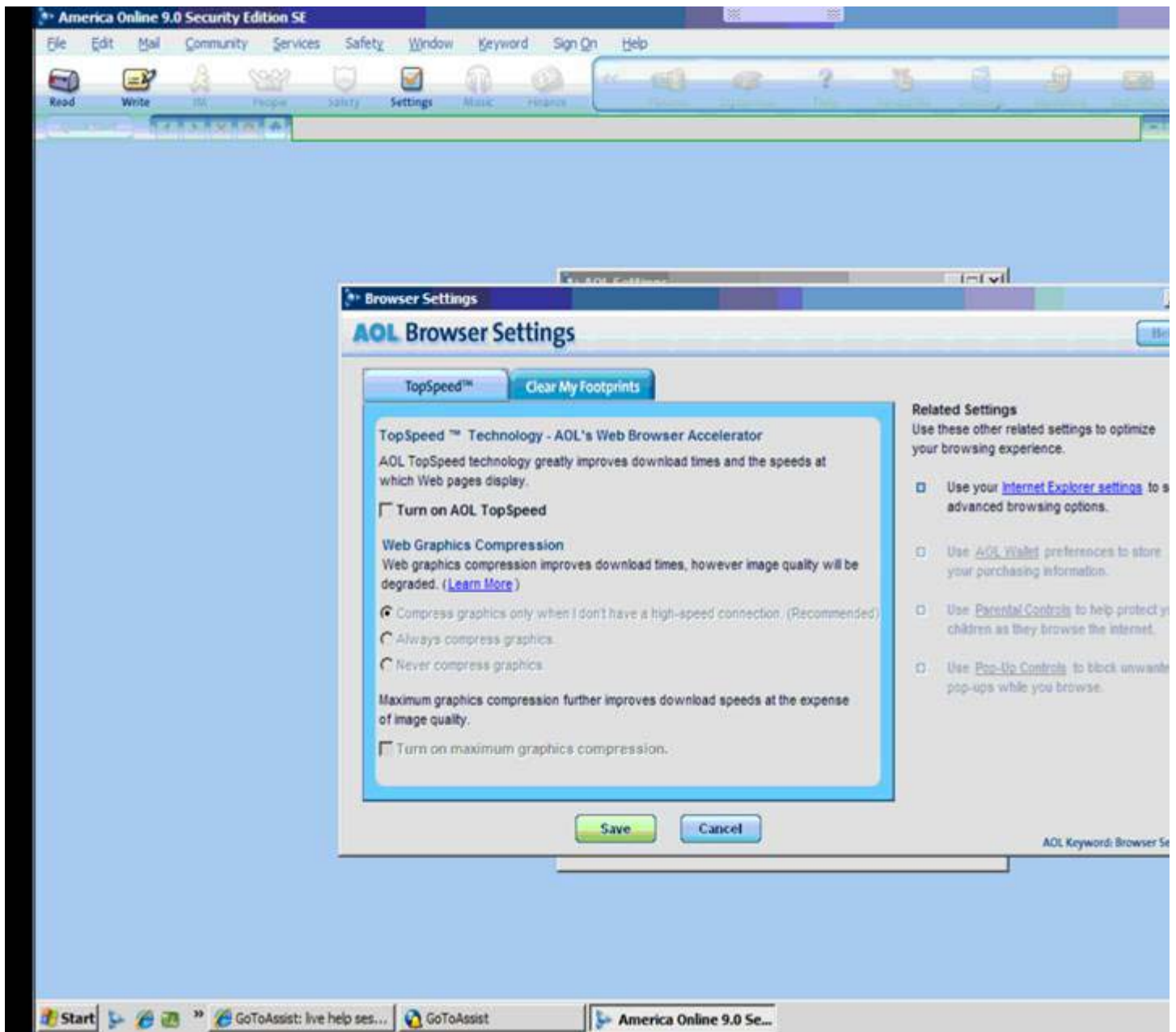


WHEN AOL CLASSIC IS FIRST OPENED, IT COMES UP TO THIS SCREEN. BEFORE LOGGING IN, CLICK ON SETTINGS

**DO NOT LOG IN!!!!** – The settings menu is different once logged in and you won't be able to get to the TOPSPEED Settings. You have to click SETTINGS before Logging In to get the next screen.



AT THIS POINT, CLICK INTERNET PROPERTIES



**THE TOPSPEED SETTINGS IMMEDIATELY COMES UP – UNCHECK “TURN ON AOL TOPSPEED”**